

Yang Liu 刘洋

消失的影像

Broken Connection

for violin and electronics

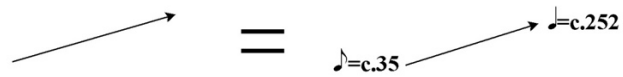
2015

Notes for performance:

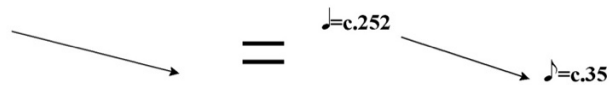
Violin:

- There are only two tempos in this piece: ♩=c.35 and ♩=c.252

- The upward arrow indicates tempo gradually move from ♩=c.35 to ♩=c.252



- The downward arrow indicates tempo gradually move from ♩=c.252 to ♩=c.35



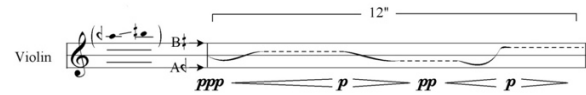
- The indications of pitches before the violin's melodic line represent the note range of the following glissandi line.

Violin

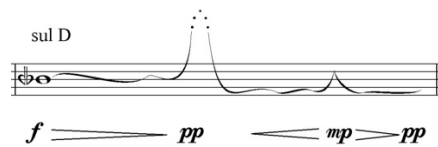
12"

ppp *p* *pp* *p*

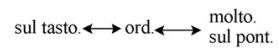
- “ ----- ” This kind of dotted line indicates sustain note at the same pitch in the music.




- “ ” This kind of dotted line only represents the shape of the glissandi line, this line means no sound at this part of the glissandi.




- This indication means player can choose freely between ‘sul tasto.’, ‘ord.’ and ‘molto. sul pont.’ , and gradually move from one to another at anywhere in that bar.

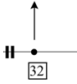


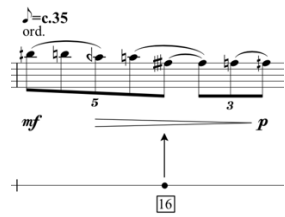
- Duration of silence does not have to be exact, but try to make it as close as possible.

-  only lightly touch the string when playing

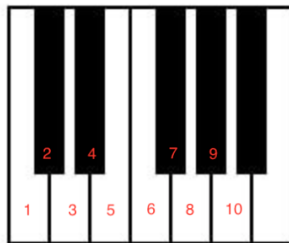
-  change back to normal pressure

Electronic:

- There are 32 electronic samples which are located in the electronic part of the score with numbers:  , while the directions of the arrows show the specific locations of these samples in this piece:



- During the performance, the electronic samples are inserted into a keyboard and labeled as 1-32 numbers on the keys, and play in order from 1 to 32 throughout the whole piece:



- Contact the composer to obtain the sound files. (musicliu1988@hotmail.com)

Duration: 15 minutes

Broken Connection

Yang Liu (2014)

A

Violin

Elec.

12" 8" Silence

3

16" 4" Silence

5

12" 4" Silence

ppp *p* *pp* *p* *ppp*

p *pp* *p* *ppp*

1

2
7

(Bb) (Ab) Bb Ab

12" 8"

pp *mp* *pp*

Silence

2

9

(Bb) (Ab) Bb Ab

16" 4"

p *pp* *mf* *pp*

Silence

2

11

(Bb) (Ab) Bb Ab

8" 4" 8"

ppp *p* *ppp*

Silence Silence

3 4 5

14

4"

Silence

(*♩* *♯* *♩*)

C

A

mf

8"

pp

mf

pp

4"

Silence

6

17

12"

8"

Silence

(*♩* *♯* *♩*)

B

A

p

mf

pp

f

p

7

19

4"

16"

B

Soft but very clear

ord. \longleftrightarrow sul tasto

pp

mf

pp

mp

ppp

$\text{♩} = c.35$

3

4 4" 8" $\text{♩} = c.35$ 12"

ord. ← sul pont.
non gliss.

20

Silence

mf *p* *mf* *pp* *mp*

8

23

ord.

5 3 5

f *p* *f*

20" 2"

Silence

mp *pp* *mf*

9

26

molto. sul pont. ord. molto. sul pont.

12"

$\text{♩} = c.35$

ord.

3

pp *f* *p* *f* *pp* *mf* *p* *f*

10 11

28

24"

sul tasto. ← ord. → molto. sul pont.

ord.

3 5

ppp mp pp f pp

12

30

4"

♩ = c.35

ord. ← molto. sul pont.

3

p mf p mp pp f pp

31

4"

♩ = c.35

16"

Silence

f

molto. sul pont. → ord.

sul tasto. ← ord. → molto. sul pont.

3

ppp mf ppp

13 14 15

6

33

8"

4"

mf

p

ord.

$\text{♩} = \text{c.}35$

Silence

Silence

5

3

36

16"

4"

pp

mf

p

ord.

ord. \leftrightarrow sul pont.

$\text{♩} = \text{c.}35$

Silence

3

39

20"

4"

f

p

mf

p

mf

pp

ord.

ord.

ord.

ord. \leftrightarrow molto sul pont. non gliss.

$\text{♩} = \text{c.}35$

$\text{♩} = \text{c.}252$

$\text{♩} = \text{c.}35$ non gliss.

Silence

3

5

3

42 $\text{♩}=\text{c.252}$

p *mf* *pp* *p* *f* *pp* *f*

$\text{♩}=\text{c.35}$ 16" 7

ord. \longleftrightarrow molto sul pont.

3

19

43 $\text{♩}=\text{c.252}$

ord. 5 3 $\text{♩}=\text{c.35}$

pp *f* *pp* *ff* 3 3

20

44

8" 20"

Silence $\text{♩}=\text{c.35}$ molto. sul tasto. \longleftrightarrow ord. \longleftrightarrow sul pont.

mf *p* *f* *pp* *mp* *ppp*

3

21

8

46

4" **D** 12" 4"

Silence

ord.

pp *mp* *pp*

22 23

49

$\text{♩} = c.35$

f *p* *f* *pp* *mp* *pp*

sul D

8" 4"

Silence

52

8" $\text{♩} = c.252$ 4" *molto. sul pont.*

sul D

fp *mf* *pp* *mf* *p* *mf* *fp* *mp*

24 25

55

8" Silence

ord. $\text{♩} = \text{c.35}$

4" Silence

9

f

26

58

$\text{♩} = \text{c.35}$

pp *mf* *p* *mf* *ff* *pp*

3

27

60

4" Silence

sul A

16" *pp* *f* *pp* *mf* *ppp*

molto. sul pont. ord.

10
62

8"

Silence

E ♩=c.35

f *pp* *mf*

8^{va}

28 29

64

f *pp* *f* *p* *mf*

♩=c.252

♩=c.35

8^{va}

30

66

p *f* *p* *pp* *sf*

8^{va}

31

68 8" ♩=c.252 8^{va} 2" 11

Silence *pp* *Silence*

71 8" ♩=c.252 8^{va} 8" ♩=c.252 8^{va}

mp *Silence* *pp*

32